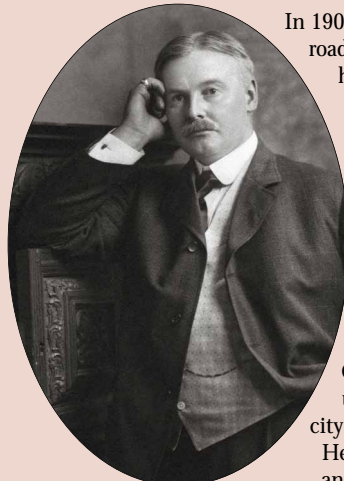


Heart's Delight Farm



Welcome to Our Farm

We are pleased you have stopped by to visit Miner Institute. Won't you join us in a short walk, which includes ten interpretive exhibits that will bring you back to our beginnings as Heart's Delight Farm?



William Henry Miner
1862-1930

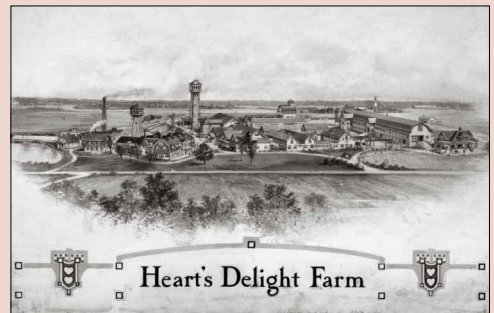
In 1903, William H. Miner, a wealthy railroad entrepreneur, began transforming his boyhood home into a rural retreat called Heart's Delight Farm. He and his wife Alice lived in two worlds. They kept the benefits of Chicago with its bustling business and city living, but added the peace and quiet of country life near the hamlet of Chazy on the homestead of his grandfather Clement. Miner could continue to make money in the busy city of Chicago but also retreat to his Heart's Delight, so close to nature, and to his thinking, closer to God.



Alice Trainer Miner
1863-1950

If you happened by in 1902, you would be looking at a little farmhouse and a modest cattle barn sitting on 144 acres, what is known in the real estate trade nowadays as a "handyman's special" or a "little fixer-upper." If you wandered back ten years later, you would be standing in the middle of a huge 8,000 acre complex called Heart's Delight Farm, a source of undeniable pride—and immense joy—to William H. and Alice T. Miner.

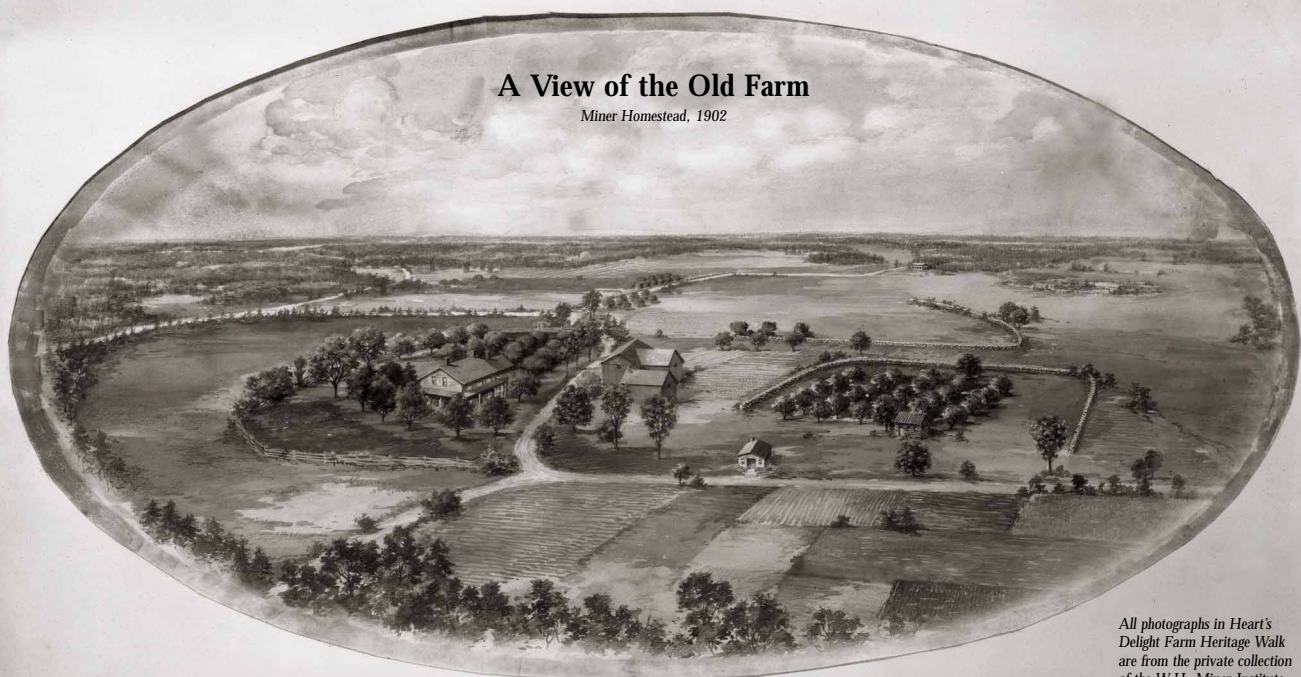
Please follow our heritage walk and step back a century into Heart's Delight Farm.



Heart's Delight Farm, 1912

A View of the Old Farm

Miner Homestead, 1902



All photographs in Heart's Delight Farm Heritage Walk are from the private collection of the W.H. Miner Institute.