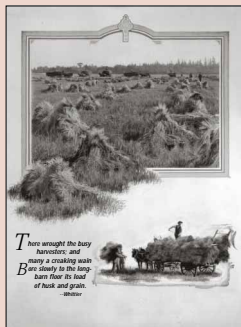


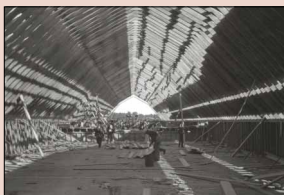
Hustle and Bustle on the Farm



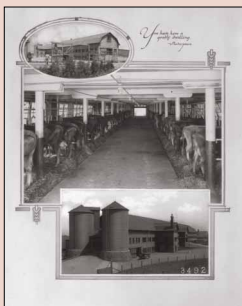
The main farm complex of dozens of buildings grew with amazing speed. The long barn on the right of the barnyard was constructed in 1906 (bottom). It took thousands of hours of manual labor to complete this one building within that year. Imagine how your arm would have felt if you were one of those carpenters, cutting rafters with a hand saw all day! But there was also the pride in knowing you had helped build a barn 300 feet long and 45 feet wide, much larger than any other in the area. Silos and storage buildings were erected at the far end of this structure to hold hay and other harvested grains for feeding livestock. In use for many decades as Heart's Delight Dairy Barn, this building is now Miner Institute's Horse Barn.



Fieldwork on the farm.



Construction of second story of dairy barn.



Home of the dairy herd.

The barnyard area has always been a center of activity. Workers could be found here any time of the year, doing one of the many tasks needed to keep the farm in business—from bringing in wagons of firewood to weighing wagonloads



Wagons burdened with the harvest.



Harvest heading toward the gristmill and storage area.

of grain on the storehouse scales, from milking cows to making boxes for shipping Heart's Delight Farm produce to the fanciest New York City hotels.

Bounded by the Dairy Barn on the right and the Storehouse on the left, this was a bustling scene in the early days of Heart's Delight Farm. The Storehouse was the receiving office for all materials coming into the farm. Centered beyond the storage area was the Gristmill, built in 1908.



The storehouse and scales.

Early Construction Stage of the Dairy Barn

